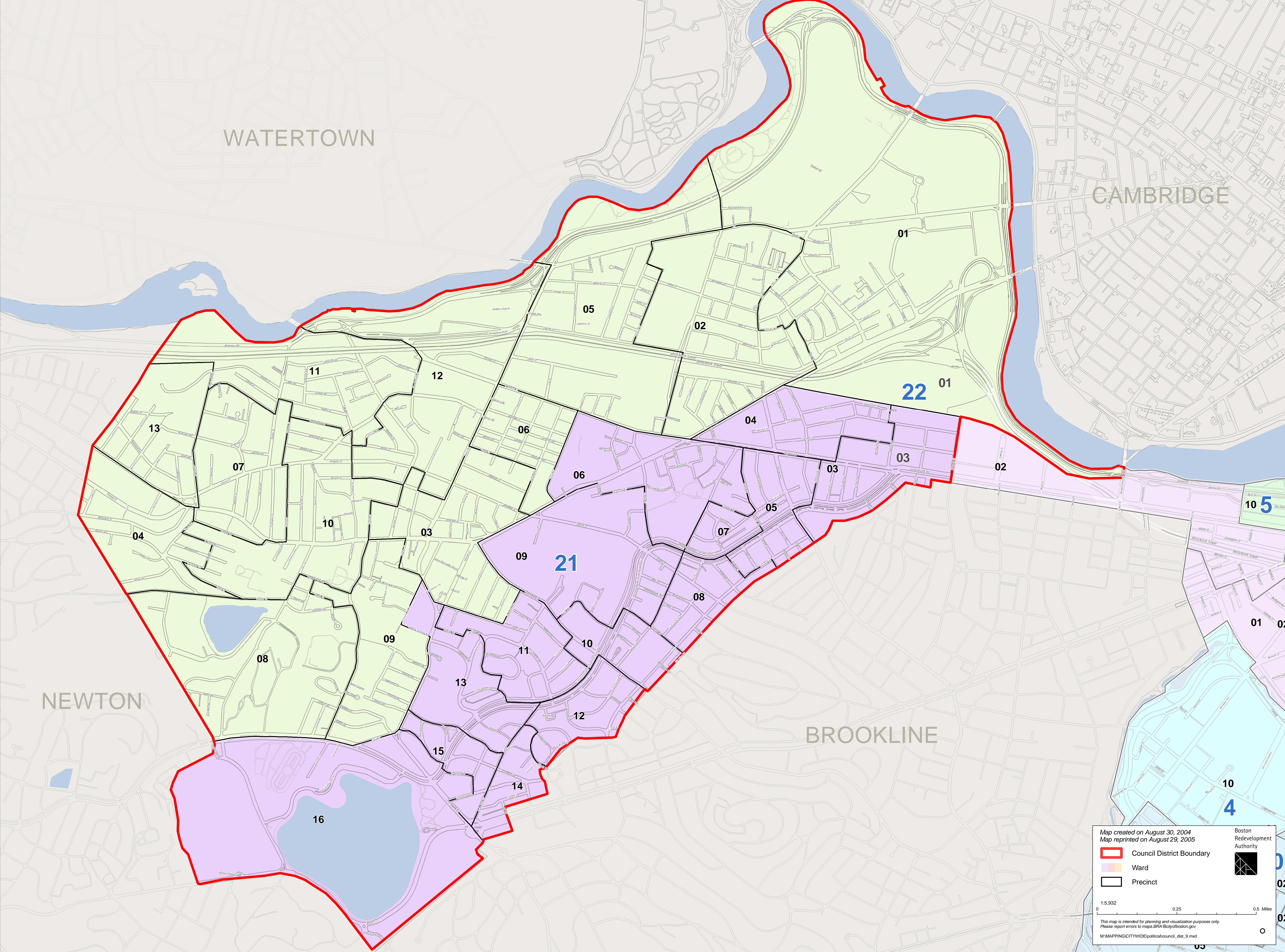


City Council District 9



Map created on August 30, 2004
Map reprinted on August 29, 2005

Legend:
[Red Line] Council District Boundary
[Color Swatches] Ward
[Black Outline] Precinct

Scale:
1:5,932
0 0.25 0.5 Miles

Source:
Boston Redevelopment Authority
M:\MAPPING\CITYWIDE\political\council_dist_9.mxd

This map is intended for planning and visualization purposes only. Please report errors to maps.BRA@cityofboston.gov